



Torno





Torno by Eureka balances simplicity and depth with every curve. Made with natural materials, the unique design feels both sculptural and organic.

Naturally Distinct

Outside In



Torno | Stacked Pendants in Terracotta Brown

*“Study nature, love nature,
stay close to nature. It will
never fail you.”*

Frank Lloyd Wright



Made from wood or clay,
Torno brings a natural
touch indoors—creating a
warm connection to nature.
An inviting choice for
hospitality spaces.

Material Matters



A luminaire that highlights the beauty of the natural materials it is made from.





Torno | Wall-mounted in Ivory White



“Torno adds a grounded, calming vibe to a space by bringing in the sophistication and craftsmanship of ceramic and wood.”

Martin Gonzalez Godoy
Eureka Industrial Designer

Grounded Design

Formed from materials rooted in the earth, Torno adds a sculptural touch from above that feels delightfully unexpected.



Refined By Hand

Torno is crafted through molds, machines and the hands of artisans, making each piece unique.





*The human touch invites
introspection, infusing
the shades with a calming
connection to nature.*

Ceramic

Each finish evokes a distinct mood while revealing the material's natural character.



Earth-Inspired Finishes



The ceramic shade, with its sculpture-like quality, features continuous curves on both the interior and exterior.





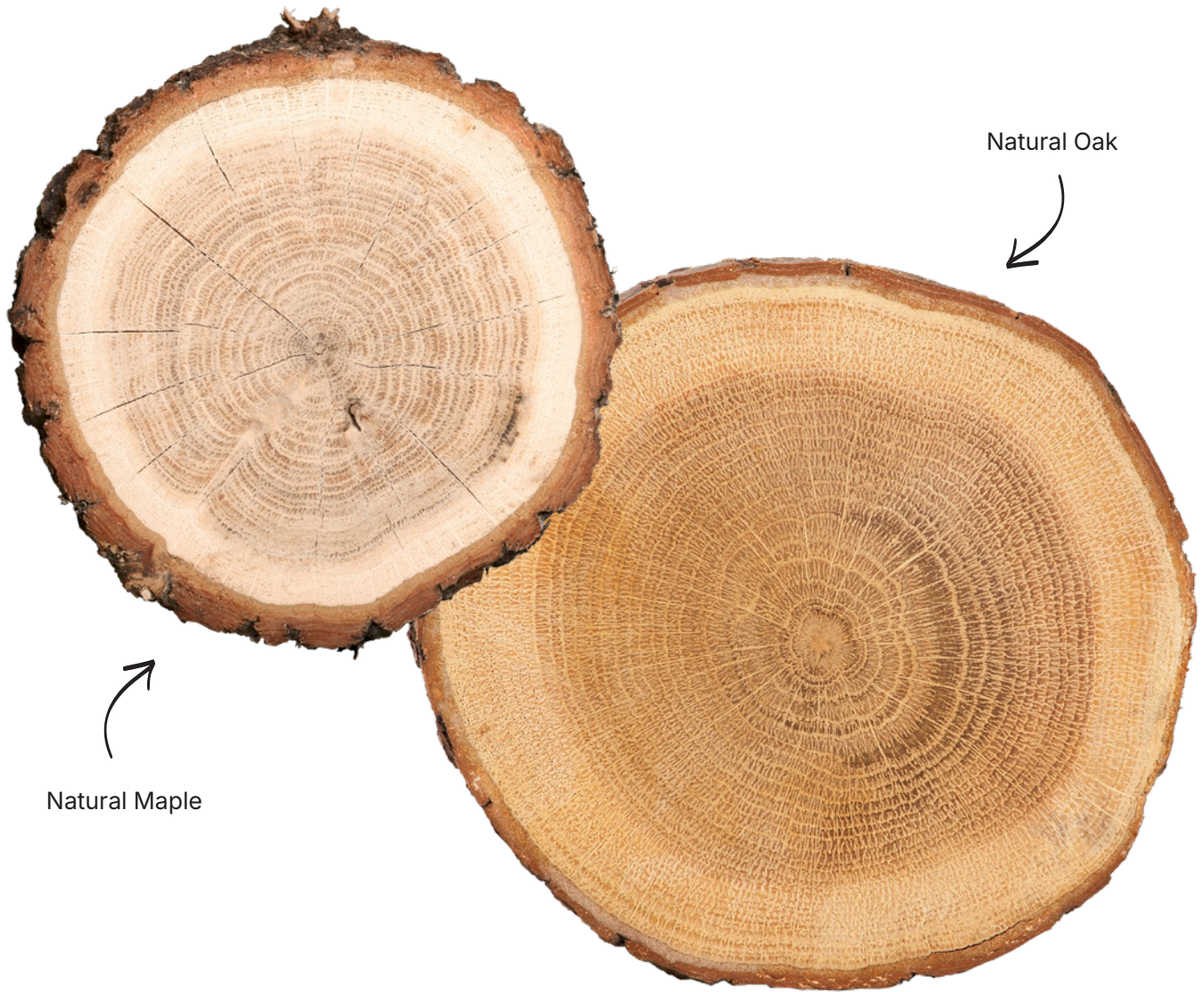
Torno | Wall-mounted in Ivory White



*When
wall-mounted,
the backlight
casts a soft
halo that gently
contrasts with
the luminaire's
shadow.*

Wood

The wood shade, made of solid locally sourced maple or oak, is pressed into a flat shape. It is then finished by hand to ensure the smooth continuous curve and to maintain a sculptural feel.



Wood With Character



Natural Maple (Left) & Natural Oak (Right)



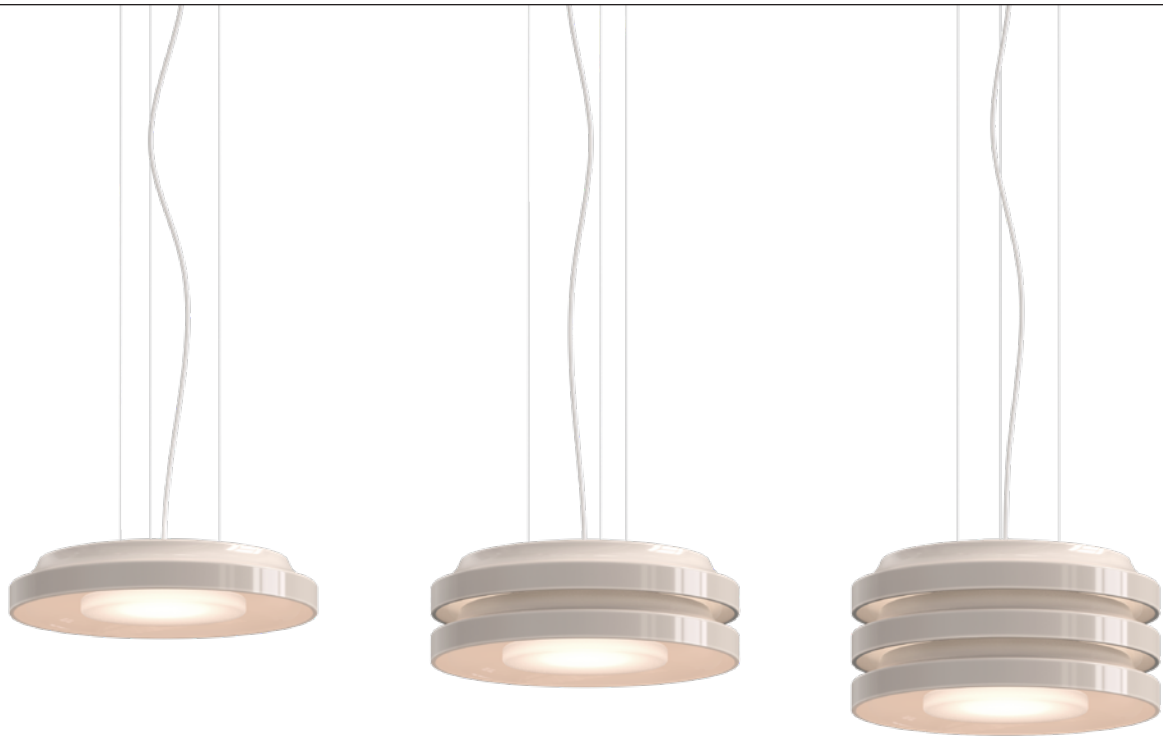
Natural Oak

*Torno anchors
an interior with
quiet presence,
balancing warmth
and refinement
through
thoughtfully
shaped materials.*





Torno | Wall-mounted and Pendant in Natural Maple



Elevated Aesthetic

Create beautiful vertical compositions by stacking up to three layers. Or design a cluster and vary the mounting heights for a playful, dimensional installation.







TORNO | [TORNO.EUREKALIGHTING.COM](https://torno.eurekalighting.com)

FOLLOW US FOR INSPIRATION,
IDEAS AND NEWS:



SIGN UP TO BE THE FIRST TO KNOW
ABOUT NEW EUREKA LUMINAIRES:

